

workshop

Lise-Meitner-Strasse 6, D-89081 Ulm, Germany
Tel. +49 (0) 731 140 700, Fax. +49 (0) 731 140 70200
www.witec.de, info@witec.de

WITec
focus innovations

Introduction to Confocal Raman and Scanning Probe Microscopy 11. March 2010 - Tsukuba International Congress Center Tsukuba, Japan

This workshop will give a detailed introduction to the operational principles and instrumental configurations relevant to confocal Raman and Scanning Probe Microscopy (AFM, SNOM, Pulsed Force Mode). Our Speakers will cover several aspects of Raman and SPM imaging and their fields of applications. An extensive system demonstration gives the participants the opportunity to see this knowledge applied

using an alpha300 SR (combined SNOM & Confocal Raman Microscope). Participants are welcome to submit their individual samples at this workshop for evaluation in the WITec headquarter. Scientists interested in how to chemically identify and image the compounds of a sample at the highest spatial resolution are invited to participate. Typical research fields for confocal Raman

imaging are pharmaceuticals and cosmetics, materials and polymer sciences, archaeology and geoscience, forensics, coatings, thin films and all fields where a clear identification of the distribution of chemical compounds is a necessity.

Program

Thursday, 11th of September 2010

09.30 - 09.50

09.50 - 10.00

Yuji Kohmura

10.00 - 11.00

Matthias Kress

11.00 - 11.15

11.15 - 12.15

Dr. Thomas Dieing

12.15 - 13.00

13.00 - 13.30

13.30 - 16.30

Registration

Opening Speech

Introduction to Confocal Raman Imaging

Coffee Break

Combining High Resolution Optical and Scanning Probe Microscopy

Lunch Break, incl. Lunch Snack

Moving to National Institute for Materials Science (NIMS)

Equipment Demonstration

Speakers

Yuji Kohmura

Mr. Kohmura is President at LUCIR Inc., Tsukuba, Japan.

Matthias Kress

Mr. Kress is Director Sales Asia at WITec GmbH, Ulm, Germany.

Dr. Thomas Dieing

Dr. Dieing is a Physicist and Director of Customer Support at WITec GmbH, Um, Germany.

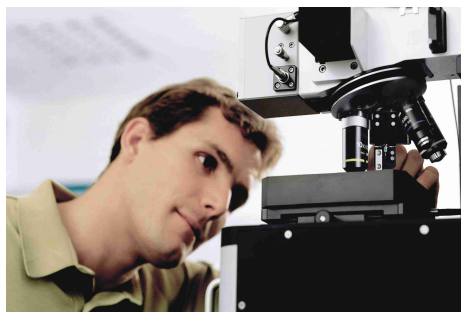


Fig. 1: WITec alpha300 Microscope System

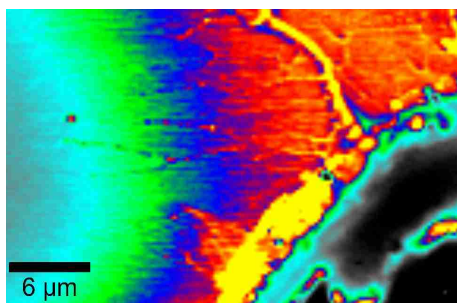


Fig. 2: Splash of Si on a Si-Solar cell device (integral intensity of the 1st order Si peak).

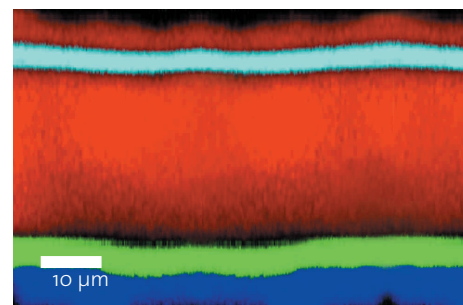


Fig. 3: Raman Image of a Multi-layer polymer coating.

workshop

Lise-Meitner-Strasse 6, D-89081 Ulm, Germany
Tel. +49 (0) 731 140 700, Fax. +49 (0) 731 140 70200
www.witec.de, info@witec.de



General Information

The workshop is free of charge but it requires registration due to limited availability of places. In order to register, please fill in the form below and fax it to Mr. Kimihiro Shinohara (Fax: +81 29 848 3031). You may also send your contact information electronically to

shinohara@lucir.co.jp

The number of participants is limited, so book early to save your place.
The language of the workshop is English.

Workshop venue in the morning:

Tsukuba International Congress Center
2-20-3, Takezono
Tsukuba, Ibaraki, 305-0032
Japan
Room No.: 303

Workshop venue in the afternoon:

National Institute for Material Science
(NIMS) Namiki Site, Quake-Free
Laboratory, 1-1 Namiki
Tsukuba, Ibaraki 305-0044
Japan

Local Contact Person:

Mr. Kimihiro Shinohara
LUCIR Inc.
601-3 Nakabeppu
300-2667- Tsukuba-city Ibaraki
Japan
phone +81 29 848 3030
fax +81 29 848 3031
e-mail: shinohara@lucir.co.jp

Registration

I would like to register for the Workshop.

Institution:

E-mail:

Name and Title:

Address:

Phone:

Signature:

Fax: